

# Safety Electrical Equipment



Short Catalogue







 **ASP**  
NUOVA  
*make them safe*



**The value of dedicated specialisation.**

Founded in 1984, Nuova Asp established itself in the industrial plant security sector where work is carried out in potentially dangerous and areas with inflammable materials and explosive gases. In particular, the company designs and produces electrical security equipment for explosion-proof and waterproof electrical plant used in the chemical and petrochemical industries.

The optimisation and constant updating of productive processes make it possible for the company to offer the best possible solutions for each client, from bulk production to limited and also personalised series.

**Nuova ASP today.** Two companies now make up the Nuova Asp Group; a marketing company and the new productive unit, which was set up in 2006 with substantial resources. The result of this investment has been the competitive advantage that derives from a direct control of costs across all phases of production.

**Quality. The environment. Real security.**

Quality is the cornerstone of both the processes and the approach of Nuova Asp and operating in a logic centred on excellence has won the company a series of important certifications.

In 1994, Nuova Asp was one of the first Italian companies to achieve CSQ certification, according to ISO 9002. The company subsequently received system quality certification UNI EN ISO 9001/2008. Moreover the production processes have ATEX notification, for being realised and controlled thanks to advanced technologies. The norms make it possible to identify companies' compliance in the production of equipment and protection systems designed for use in potentially explosive environments.

In the area of environmental impact, Nuova Asp received ISO 14001:2004 certification for its Environmental Management System. The company obtained also the certification OHSAS 18001 Occupational Health and Safety Management Systems.

**A complete and secure range.**

The range of electro-mechanical equipment for potentially explosive environments designed and produced by Nuova Asp is both complete and subject to personalisation to meet with clients' specific needs.

# make them safe



## Productive range

- Lighting and receptacle socket outlet panel boards
- Motor starters panel boards
- Control system earthing panel boards
- Marshalling, pulling and junction boxes in GRP, aluminium and stainless steel
- Instruments housings
- Ex ed control stations in GRP, aluminium and stainless steel enclosures
- Circuit breakers, on-load switch and selector switches
- Receptacle socket outlets in resin or aluminium with junction box
- Incandescent, fluorescent, led and discharge lamps lighting fixtures
- Emergency lighting fixtures
- Traffic lights
- Obstruction lights
- Warning lights
- Horns, bells and sirens
- Cable glands
- Sealing fittings
- Junction and pulling boxes
- Accessories for Ex zone as reducers, adaptors, elbows, flexibles etc.

## Materials used

- Aluminium alloy with less than 0.1% copper
- Stainless steel
- Fiberglass reinforced polyester
- Brass

## A variety of markets, a single interlocutor.

Nuova Asp operates in a variety of market sectors and its interlocutors are equally varied, both domestically and in international markets.

As an authentic partner to its customers, Nuova Asp offers products and support across the entire supply chain, from consulting services in the design stage - guaranteeing genuinely personalised solutions - to after-sales assistance. Nuova Asp's main interlocutors are:

*oil companies, companies engaged in the production and distribution of electricity, refineries, gas distribution companies, water purification companies, nuclear plants, engineering firms, municipal bodies, installation companies, the timber industry, the chemical industry, agribusiness companies, the pharmaceutical industry, mining companies, storage and warehousing companies, airports.*

The business of our clients are often in the front line of technological challenges.

Nuova Asp is proud to support them, anywhere in the world.

## Great organisation, great partners.

Choosing Nuova Asp means being able to depend on an organisation that can guarantee high quality intervention always and anywhere.

Nuova Asp has a range of competent and qualified partners, able to develop not only the market but also to manage effective production, with the guarantee of the operational and productive excellence of Nuova Asp.

To ensure this, the company conducts an authentic quality audit with ISO standards, in order to certify the phases that are contracted out to its partners.

Thanks to its high level of specialisation, the Nuova Asp Group is a point of reference of absolute SECURITY for all of its customers.



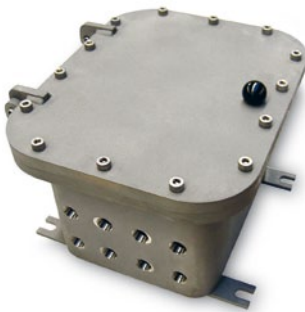
## EJB SERIES ALUMINIUM ENCLOSURES

This enclosure is used as panel board or terminal box, with the installation of electrical equipment (switches, signals, circuit breakers, on-load switches transformers, ect). The cover, on request, will be equipped with glass to visualize instruments mounted inside.

Copper-free aluminium alloy or cast iron body and cover.  
Epoxy coating grey (RAL 9006). Other colours on request.

**code: EJB**

**II 2 GD Ex d IIB + H2  
IP 66, suitable for  
ZONE 1-2-21-22**



## EJB SERIES AISI 316L ENCLOSURES

This enclosure is used as terminal box or panel board, with the installation of electrical equipment (switches, signals, circuit breakers, on-load switches, transformers, ect). The cover may be equipped with transparent glass to visualize instruments mounted inside.

Stainless steel AISI 316L body and cover.  
Hardware in stainless steel, AISI 316 standard.

**code: EJBX**

**II 2 GD Ex d IIB + H2  
IP 66, suitable for  
ZONE 1-2-21-22**



## GUB SERIES ENCLOSURES

This enclosure is used as panel board or terminal box, with the installation of electrical equipment (switches, signals, circuit breakers, on-load switches, transformers, ect). The cover, on request, will be equipped with glass to visualize instruments mounted inside.

Copper-free aluminium alloy or cast iron body and cover.  
Hardware in stainless steel, AISI 304 standard, AISI 316 on request.  
Epoxy coating grey (RAL 9006). Other colours on request.

**code: GUB**

**II 2 GD Ex d IIC  
IP 66, suitable for  
ZONE 1-2-21-22**



## GROUNDING CONTROL SYSTEMS

The earthing control system is made using our enclosures EJB or GUB. It makes control of correct connection to earth circuit for tanker trucks during loading/unloading operations for flammable liquids inside hazardous locations. The system is complete with clamp and connection cable (truck or tank must be connected to earth by mean of separate clamp not supplied with Grounding Control System).

Copper-free aluminium alloy or cast iron body and cover.  
Hardware in stainless steel, AISI 304 standard, AISI 316 on request.  
Epoxy coating grey (RAL 9006). Other colours on request.

**code: EJB.SM - GUB.SM**

**II 2 GD Ex d IIB + H2  
IP 66, suitable for  
ZONE 1-2-21-22**

**II 2 GD Ex d IIC  
IP 66, suitable for  
ZONE 1-2-21-22**



### EJC™ SERIES ENCLOSURES

This enclosure is used as panel board or terminal box, with the installation of electrical equipment ( switches, signals, circuit breakers, on-load switches transformers, ect.) The cover, on request, will be equipped with glass to visualize instruments mounted inside.

Copper-free aluminium alloy or cast iron body and cover.  
Hardware in stainless steel, AISI 304 standard, AISI 316 on request.  
Epoxy coating grey (RAL 9006). Other colours on request.

**code: EJC**

**II 2 GD Ex d IIC  
IP66, suitable for  
ZONE 1-2-21-22**



### GRP JUNCTION BOXES

This enclosure is used as terminal box, with the installation of terminals or bus-bars of different sizes. The size of boxes are modular so to joint together through specially designed flanges granting the IP protection.

GRP (glass reinforced polyester) resin body and cover.  
Hardware in stainless steel, AISI 304 standard, AISI 316 on request.

**code: AS**

**II 2 GD Ex e IIC  
IP 66, suitable for  
ZONE 1-2-21-22**

**II 2 GD Ex ia IIC  
IP 66, suitable for  
ZONE 1-2-21-22**



### AISI 316L STAINLESS STEEL JUNCTION BOXES

This enclosure is used as terminal box, with the installation of terminals or bus-bars of different sizes. The size of boxes are modular so to joint together through sealing gaskets granting the IP protection. This enclosure can be supplied also with removable flanges on each side.

Stainless steel AISI 316L body and cover.  
Hardware in stainless steel AISI 316L standard

**code: ESX**

**II 2 GD Ex e IIC  
IP 66, suitable for  
ZONE 1-2-21-22**

**II 2 GD Ex ia IIC  
IP 66, suitable for  
ZONE 1-2-21-22**

**II 3GD Ex nA IIC  
IP 66, suitable for  
ZONE 2-22**

**II 2 D Ex tb IIC  
IP 66, suitable for  
ZONE 21-22**



### ALUMINIUM JUNCTION BOXES

This enclosure is used as terminal box, with the installation of terminals or bus-bars of different sizes.

Copper-free aluminium alloy body and cover.  
Hardware in stainless steel, AISI 304 standard, AISI 316 on request.  
Epoxy coating grey (RAL 9006). Other colours on request.

**code: ESA**

**II 2 GD Ex e IIC  
IP 66, suitable for  
ZONE 1-2-21-22**

**II 2 GD Ex ia IIC  
IP 66, suitable for  
ZONE 1-2-21-22**

**II 3GD Ex nA IIC  
IP 66, suitable for  
ZONE 2-22**

**II 2 D Ex tb IIC  
IP 66, suitable for  
ZONE 21-22**



## GRP ENCLOSURE FOR CONTROL STATIONS

This enclosure can be fitted with push buttons, pilot lights, emergency push button with cover protection, mushroom with key and stayput, selector switches analogic or digital instruments.

GRP (glass reinforced polyester) resin body and cover.  
Hardware in stainless steel, AISI 304 standard, AISI 316 on request.

**code: ASCS**

**II 2 GD Ex ed IIC  
IP 66, suitable for  
ZONE 1-2-21-22**

**II 2 GD Ex ia IIC  
IP 66, suitable for  
ZONE 1-2-21-22**



## AISI 316L OR ALUMINIUM ENCLOSURE FOR CONTROL STATIONS

This enclosure can be fitted with push buttons, pilot lights, emergency push button with cover protection, mushroom with key and stayput, selector switches and analogic or digital instruments.

Copper-free aluminium alloy epoxy coated or in stainless steel AISI 316L body and cover.  
Hardware in stainless steel AISI 316 standard.

**code: ESXCS**

**II 2 GD Ex de IIC  
IP 66, suitable for  
ZONE 1-2-21-22**

**II 2 GD Ex ia IIC  
IP 66, suitable for  
ZONE 1-2-21-22**

**II 3GD Ex nA IIC  
IP 66, suitable for  
ZONE 2-22**

**II 2 D Ex tb IIC  
IP 66, suitable for  
ZONE 21-22**



## AISI 316L OR ALUMINIUM ENCLOSURE FOR CONTROL STATIONS

This enclosure can be fitted with push buttons, pilot lights, emergency push button with cover protection, mushroom with key and stayput, selector switches and analogic or digital instruments.

Copper-free aluminium alloy epoxy coated or in stainless steel AISI 316L body and cover.  
Hardware in stainless AISI 316 standard

**code: ESACS**

**II 2 GD Ex de IIC  
IP 66, suitable for  
ZONE 1-2-21-22**

**II 2 GD Ex ia IIC  
IP 66, suitable for  
ZONE 1-2-21-22**

**II 2 D Ex tb IIC  
IP 66, suitable for  
ZONE 21-22**

**II 3GD Ex nA IIC  
IP 66, suitable for  
ZONE 2-22**



## JUNCTION AND PULLING BOXES

These enclosures are used as terminal boxes or pulling boxes. They are made in round shape with a large combination of entries so to cover all the installation requirements of a conduit system.

Copper-free aluminium alloy body and cover.  
Hardware in stainless steel, AISI 304 standard, AISI 316 on request.  
Epoxy coating on request.

**code: SB - SC - SL - ST - SX - SW - SD - SM - SJ - SY**

**II 2 GD Ex d IIC  
IP 66, suitable for  
ZONE 1-2-21-22**





### INSTRUMENT HOUSINGS

This enclosure is used as instrument housing such as digital or analogue ammeters and voltmeters. Can be also equipped with optical instruments such digital cameras and photoelectric lighting controls.

Copper-free aluminium alloy body and cover.  
Hardware in stainless steel  
Borosilicate glass window.  
Epoxy coating grey (RAL 9006). Other colours on request.

**code: EMH**

**II 2 GD Ex d IIC  
IP 66, suitable for  
ZONE 1-2-21-22**



### ALUMINIUM ENCLOSURE FOR CONTROL STATIONS

This enclosure can be fitted with push buttons, pilot lights, emergency push button with glass protection, mushroom with key and stayput and selector switches.

Copper-free aluminium alloy body and cover.  
Hardware in stainless steel, AISI 304 standard, AISI 316 on request.  
Epoxy coating grey (RAL 9006). Other colours on request.

**code: EFDC**

**II 2 GD Ex d IIC  
IP 66, suitable for  
ZONE 1-2-21-22**



### ALUMINIUM ENCLOSURE FOR CIRCUIT BREAKER

This enclosure can be fitted with thermomagnetic circuit breaker used for command and protection of three-phase motors.  
The circuit breaker has an adjustable thermomagnetic protection and an external control.

Copper-free aluminium alloy body and cover.  
Hardware in stainless steel, AISI 304 standard, AISI 316 on request.  
Epoxy coating grey (RAL 9006). Other colours on request.

**code: EFSC 218**

**II 2 GD Ex d IIB  
IP 66, suitable for  
ZONE 1-2-21-22**



### ALUMINIUM ENCLOSURE FOR SWITCHES AND SELECTORS

This enclosure can be fitted with rotary type switches, changeover switches and selectors with wide range of command cam equipment.

Copper-free aluminium alloy body and cover.  
Hardware in stainless steel, AISI 304 standard, AISI 316 on request.  
Epoxy coating grey (RAL 9006). Other colours on request.

**code: EFSC**

**II 2 GD Ex d IIC  
IP 66, suitable for  
ZONE 1-2-21-22**



### ALUMINIUM RECEPTACLE SOCKET OUTLET

The socket and plug serie FSQ is provided with on-load switch and plugging is possible, for safety reasons, only with open on-load switch. Power is switched on by means of a short twist of the plug. Available with 3 or 4 poles up to 16 Amp - 63 Amp.

Copper-free aluminium alloy body and cover.  
Hardware in stainless steel.  
Epoxy coating grey (RAL 9006). Other colours on request.Ex-d IIC

**socket code: FSQP    plug code: FSQS**

**II 2 GD Ex d IIC  
IP 66, suitable for  
ZONE 1-2-21-22**



### ALUMINIUM RECEPTACLE SOCKET OUTLET

The socket and plug serie FSQPa and FSQS are provided with on-load switch and plugging is possible, for safety reasons, only with open on-load switch. Power is switched on by means of a short twist of the plug. Available with 3 or 4 poles to 32 Amp - 63 Amp.

Copper-free aluminium alloy body and cover.  
Hardware in stainless steel, AISI 304 standard, AISI 316 on request.  
Epoxy coating grey (RAL 9006). Other colours on request.

**socket code: FSQPa    plug code: FSQS**

**II 2 GD Ex d IIC  
IP 66, suitable for  
ZONE 1-2-21-22**



### PANEL SOCKET

The panel socket series FSQP-P and FSQS are provided with on-load switch and plugging is possible, for safety reason, only with open on-load switch. Power is switched on by means of a short twist of the plug. Available with 3 or 4 poles up to 16 Amp – 125 Amp.

Copper-free aluminium alloy body and cover.  
Hardware in stainless steel  
Epoxy coating grey (RAL 9006). Other colours on request.

**code: FSQP-P**

**II 2 GD Ex d IIC  
IP66, suitable for  
ZONE 1-2-21-22**



### WELLGLASS LIGHTING FIXTURES

This lighting fixture is normally fitted with incandescent or halogen or fluorescent and energy saving lamps. It's normally used for indoor and outdoor illumination areas which requires concentrated, diffuse or ambient light.

Copper-free aluminium alloy body and cover.  
Borosilicate glass globe.  
Hardware in stainless steel, AISI 304 standard, AISI 316 on request.  
Epoxy coating grey (RAL 9006). Other colours on request.

**code: EVAC**

**II 2 GD Ex d IIC  
IP 66, suitable for  
ZONE 1-2-21-22**



### WELLGLASS LIGHTING FIXTURES

This lighting fixture is normally fitted with discharge lamps, such as metal halide, high pressure sodium vapour and mercury vapour. It's normally used for indoor and outdoor illumination areas which requires concentrated, diffuse or ambient light.

Copper-free aluminium alloy body and cover.  
Borosilicate glass globe.  
Hardware in stainless steel, AISI 304 standard, AISI 316 on request.  
Epoxy coating grey (RAL 9006). Other colours on request.

**code: EVAC**

**II 2 GD Ex d IIC  
IP 66, suitable for  
ZONE 1-2-21-22**



### BULKHEAD LIGHTING FIXTURES

This lighting fixture is normally fitted incandescent, LED or halogen and energy saving lamps. It's normally used for illumination of places which requires small and flat shape, such as tunnels and walking passages.

Copper-free aluminium alloy body and cover.  
Borosilicate glass globe.  
Hardware in stainless steel, AISI 304 standard, AISI 316 on request.  
Epoxy coating grey (RAL 9006). Other colours on request.

**code: EVT**

**II 2 GD Ex d IIC  
IP 66, suitable for  
ZONE 1-2-21-22**



### TANK PORTHOLE LIGHTING FIXTURES

This lighting fixture is normally fitted incandescent, LED or halogen and energy saving lamps. It's used, via a porthole, for illumination of the interior of tanks containing flammable products.

Copper-free aluminium alloy body and cover.  
Borosilicate glass window.  
Hardware in stainless steel, AISI 304 standard, AISI 316 on request.  
Epoxy coating grey (RAL 9006). Other colours on request.

**code: EVO**

**II 2 GD Ex d IIC  
IP 66, suitable for  
ZONE 1-2-21-22**



### GRP FLUORESCENT LIGHTING FIXTURES

This lighting fixtures can be fitted with double bi-pin fluorescent tube. Also available as emergency unit complete with integrated battery pack.

Body in GRP (glass reinforced polyester) resin  
Transparent diffuser in antistatic polycarbonate.  
Hardware in stainless steel, AISI 304 standard, AISI 316 on request.  
Colours: black standard.

**code: AVC**

**II 2 GD Ex deq IIC  
IP 66, suitable for  
ZONE 1-2-21-22**



### FLUORESCENT LIGHTING FIXTURES

This lighting fixtures can be fitted with double bi-pin fluorescent tube or LED. Also available as emergency unit complete with integrated battery pack. Specially indicated for highly corrosive environments and marine applications.

Copper-free aluminium alloy body and cover.  
Borosilicate glass tube.  
Hardware in stainless steel, AISI 304 standard, AISI 316 on request.  
Epoxy coating grey (RAL 9006). Other colours on request.

**code: EVF**

**II 2 GD Ex d IIC  
IP 66, suitable for  
ZONE 1-2-21-22**



### FLUORESCENT LIGHTING FIXTURES

This lighting fixtures can be fitted with double bi-pin fluorescent tube or LED. Also available as emergency unit complete with integrated battery pack. Specially indicated for highly corrosive environments and marine applications.

Copper-free aluminium alloy body and cover.  
Borosilicate glass tube.  
Hardware in stainless steel, AISI 304 standard, AISI 316 on request.  
Epoxy coating grey (RAL 9006). Other colours on request.

**code: EVFG**

**II 2 GD Ex d IIC  
IP 66, suitable for  
ZONE 1-2-21-22**

**II 2 GD Ex de IIC  
IP 66, suitable for  
ZONE 1-2-21-22**



### FLUORESCENT LIGHTING FIXTURES

This lighting fixtures can be fitted with double bi-pin fluorescent tube. Also available as emergency unit complete with integrated battery pack.

Body in polycarbonate.  
Trasparent diffuser in polycarbonate.  
Hardware in stainless steel, AISI 304 standard.  
Colour body: grey.

**code: AVNA**

**II 3GD Ex nA IIC  
IP 65, suitable for  
ZONE 2-22**



### FLOODLIGHTS AND WELLGLASS LIGHTING FIXTURES

These floodlights and lighting fixtures are normally fitted with discharge lamps, such as metal halide, high pressure sodium vapour and mercury vapour. They are normally used for indoor and outdoor illumination of areas which requires concentrated, diffuse or ambient light.

Copper-free aluminium alloy body.  
Temperated glass cover with closing clips in stainless steel.  
Hardware in stainless steel, AISI 304 standard, AISI 316 on request.  
Epoxy coating grey. Other colours on request

**code: SFNR**

**II 3GD Ex nR IIC  
IP 66, suitable for  
ZONE 2-22**



### WELLGLASS LIGHTING FIXTURES

This lighting fixtures is normally fitted with discharge lamps, such as metal halide, high pressure sodium vapour and mercury vapour. It's normally used for indoor and outdoor illumination areas which requires concentrated, diffuse or ambient light.

Copper-free aluminium alloy body and cover.  
Borosilicate glass globe.  
Hardware in stainless steel, AISI 304 standard, AISI 316 on request.  
Epoxy coating grey (RAL 9006). Other colours on request

**code: EWNR**

**II 3GD Ex nR IIC  
IP 66, suitable for  
ZONE 1-2-21-22**



### FLOODLIGHTS

This floodlight can be equipped with incandescent lamp up to 500W, metal halide, high pressure sodium and mercury lamp up to 400W. It's normally used for in-door and out-door illumination of areas which requires wide beam light.

Copper-free aluminium alloy body and cover.  
Borosilicate glass window.  
Hardware in stainless steel, AISI 304 standard, AISI 316 on request.  
Epoxy coating grey (RAL 9006). Other colours on request.

**code: SFD - SFDE**

**II 2 GD Ex d IIB + H2  
IP 66, suitable for  
ZONE 1-2-21-22**



### FLOODLIGHTS

This floodlight can be equipped with incandescent lamp up to 500W, metal halide, high pressure sodium and mercury lamp up to 400W. It's normally used in marine and offshore platforms for illumination of areas that requires concentrated light.

Copper-free aluminium alloy body and cover.  
Borosilicate glass window.  
Hardware in stainless steel, AISI 304 standard, AISI 316 on request.  
Epoxy coating grey (RAL 9006). Other colours on request.

**code: RCDE**

**II 2 GD Ex d IIC  
IP 66, suitable for  
ZONE 1-2-21-22**



### FLUORESCENT LIGHTING FIXTURES

This compact model has been designed as emergency light source. Equipped with different sign boards, it can be conveniently used for emergency or danger warnings. Fluorescent or LED.

Copper-free aluminium alloy or cast iron body and cover.  
Borosilicate glass window.  
Hardware in stainless steel, AISI 304 standard, AISI 316 on request.  
Epoxy coating grey (RAL 9006). Other colours on request.

**code: EJB08**

**II 2 GD Ex d IIB + H2  
IP 66, suitable for  
ZONE 1-2-21-22**



## TRAFFIC LIGHTS

The traffic light is made with EVT and is available in different combination of units coloured with additional prismatic lens for halogen or incandescent lamp, and without prismatic lens for LED. It's suitable to be used in any hazardous area, without any limitation of gas group or corrosive atmosphere.

Copper-free aluminium alloy body and cover.  
Borosilicate glass window and polycarbonate lens.  
Hardware in stainless steel, AISI 304 standard, AISI 316 on request.  
Epoxy coating grey (RAL 9006). Other colours on request.

**code: EVT**

**II 2 GD Ex d IIC  
IP 66, suitable for  
ZONE 1-2-21-22**



## FLOODLIGHTING TYPE SFDE LED

This floodlighting can be equipped with LED, wattage up to 200W. It's normally used for in-door and out-door illumination of areas which requires wide (65°) or narrow (21°).

Copper-free aluminium alloy body and cover.  
Borosilicate glass window  
Hardware in stainless steel, AISI 304 standard, AISI 316 on request.  
Epoxy coating grey (RAL 9006). Other colours on request.

**code: SFDE 24 LED  
SFDE 18 LED**

**II 2 GD Ex d IIB + H2  
IP66, suitable for  
ZONE 1-2-21-22**



## EVAC LED SERIES

This lighting fixture is normally fitted with LED. It's normally used for in-door and out-door illumination areas which requires concentrated, diffuse or ambient light.

Copper-free aluminium alloy body and cover.  
Borosilicate glass window  
Hardware in stainless steel, AISI 304 standard, AISI 316 on request.  
Epoxy coating grey (RAL 9006). Other colours on request.

**code: EVAC 201 6LED  
EVAC 200 4LED**

**II 2 GD Ex d IIC  
IP66, suitable for  
ZONE 1-2-21-22**



## FLOODLIGHTING TYPE RCDE LED

This floodlighting can be equipped with LED, wattage up to 250W. It's normally used in marine and offshore platforms for illumination of areas that requires concentrated light.

Copper-free aluminium alloy body and cover.  
Borosilicate glass window  
Hardware in stainless steel, AISI 304 standard, AISI 316 on request.  
Epoxy coating grey (RAL 9006). Other colours on request.

**code: RCDE LED**

**II 2 GD Ex d IIC  
IP66, suitable for  
ZONE 1-2-21-22**



### OBSTRUCTION LIGHTING FIXTURES

This lighting fixture is normally fitted with incandescent and energy saving lamps. It's normally used for installation on towers or high buildings as obstruction signal.

Copper-free aluminium alloy body and cover.  
Borosilicate glass globe. Adjunctive FRESNEL globe in polycarbonate.  
Hardware in stainless steel, AISI 304 standard, AISI 316 on request.  
Epoxy coating grey (RAL 9006). Other colours on request.

**code: EVAC-OL**

**II 2 GD Ex d IIC  
IP 66, suitable for  
ZONE 1-2-21-22**



### WARNING LIGHTING FIXTURES

This lighting fixture is normally fitted with rotating or flashing lamps, with different colours and functioning. It's normally used for installation together acoustic equipment to signal breakdowns, alarms, warnings, ect.

Copper-free aluminium alloy body and cover.  
Borosilicate glass globe.  
Hardware in stainless steel, AISI 304 standard, AISI 316 on request.  
Epoxy coating grey (RAL 9006). Other colours on request.

**code: EVAC-WL**

**II 2 GD Ex d IIC  
IP 66, suitable for  
ZONE 1-2-21-22**



### HORNS AND BELLS

These acoustic signallers are equipped with sounds with different intensity and frequency so to cover the main warning regulations inside hazardous areas. They are normally used for installation together visual equipment to signal breakdowns, alarms, warnings, ect.

Copper-free aluminium alloy body and cover.  
Hardware in stainless steel, AISI 304 standard, AISI 316 on request.  
Epoxy coating grey (RAL 9006). Other colours on request.

**code: ETH**

**II 2 GD Ex d IIC  
IP 66, suitable for  
ZONE 1-2-21-22**



### SIRENS

These acoustic signallers are equipped with sounds with different intensity and frequency so to cover the main warning regulations inside hazardous areas. They are normally used for installation together visual equipment to signal breakdowns, alarms, warnings, ect.

Copper-free aluminium alloy body and cover.  
Hardware in stainless steel, AISI 304 standard, AISI 316 on request.  
Epoxy coating grey (RAL 9006). Other colours on request.

**code: S2**

**II 2 GD Ex d IIC  
IP 66, suitable for  
ZONE 1-2-21-22**



## CABLE GLANDS

These cable glands are used for connecting Ex equipment using unarmoured cables. When requested a mechanical protection to the cable with a rigid or flexible conduit, a special threaded entry is provided into the external termination of the cable gland (model PNAF).

Material: nickel plated brass - brass - stainless steel.  
Standard threads: NPT - ISO 228 - ISO 7.1 METRIC.  
Other type of threads on request.

**code: PNA - PNAF**

**II 2 GD Ex d IIC  
IP 66/68, suitable for  
ZONE 1-2-21-22**

**II 2 GD Ex e IIC  
IP 66/68, suitable for  
ZONE 1-2-21-22**

**II 2 GD Ex ia IIC  
IP 66/68, suitable for  
ZONE 1-2-21-22**



## CABLE GLANDS

These cable glands are used for connecting Ex equipment using armoured cables. Available with single and double sealing system.

Material: nickel plated brass - brass - stainless steel.  
Standard threads: NPT - ISO 228 - ISO 7.1 METRIC.  
Other type of threads on request.

**code: PA - PAP**

**II 2 GD Ex d IIC  
IP 66, suitable for  
ZONE 1-2-21-22**

**II 2 GD Ex e II  
IP 66, suitable for  
ZONE 1-2-21-22**

**II 2 GD Ex ia IIC  
IP 66/68, suitable for  
ZONE 1-2-21-22**



## CABLE GLANDS

These cable glands are used for connecting Ex equipment housed in GRP or stainless steel enclosures using unarmoured cables. Available in black (Ex-e) and blue (Ex-i) colour.

Material: polyamid.  
Standard threads: ISO (pitch 1,5) - PG 40430.

**code: PCE**

**II 2 GD Ex e II  
IP 66, suitable for  
ZONE 1-2-21-22**

**II 2 GD Ex i II  
IP 66, suitable for  
ZONE 1-2-21-22**



## SEALING FITTINGS

Sealing fittings prevent passage of gas, vapours or flames through the conduit system, from one side to the other of the electrical installation. EZS is suitable for both horizontal/vertical installation while EYS is only for vertical one.

The sealing fitting are supplied together the bi-component resin.

Copper-free aluminium alloy body and cover.  
Epoxy coating on request.

**code: EYS - EZS**

**II 2 GD Ex d IIC  
IP 66, suitable for  
ZONE 1-2-21-22**





### ELBOWS

These enclosures are used as pulling boxes, in a combination of different radius, so to cover all the installations requirements of a complete conduit system.

Copper-free aluminium alloy body and cover.  
Hardware in stainless steel, AISI 304 standard, AISI 316 on request.  
Epoxy coating on request.

**code: LBH - LBHS - LBY - ELF - ELM - ELMF**

**II 2 GD Ex d IIB - IIC  
IP 66, suitable for  
ZONE 1-2-21-22**



### FLEXIBLE AND RIGID CONDUITS

The flexible conduits are used for connecting vibrating equipment, such as electrical motors, or as alternative to rigid conduit installation if this is too complicated. For rigid conduit installation system is available a wide range of accessories such as saddles, clamps, u-bolts, bushings, couplings and locknuts.

Material: galvanized steel - stainless steel.  
Standard threads: NPT - ISO 7.1 METRIC.  
Other type of threads on request.

**code: TFII - TR - GF - BU - CST - MP - MT - EM - MC - DL - DB**

**II 2 GD Ex d IIB - IIC  
IP 66, suitable for  
ZONE 1-2-21-22**



### CONDUIT FITTINGS

These fittings are used in the conduit installations for connecting the different types of equipment. Three pieces unions, reducers, adaptors and nipples in a complete range of combinations of male/female connection provides the solution to any problem given by this complicated system.

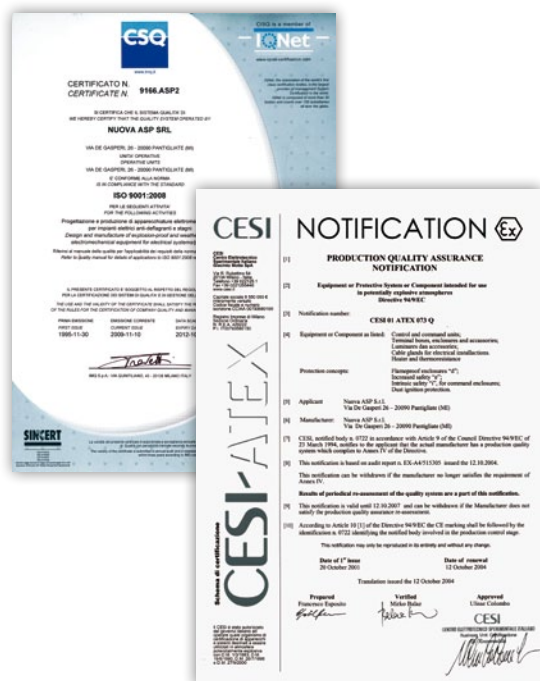
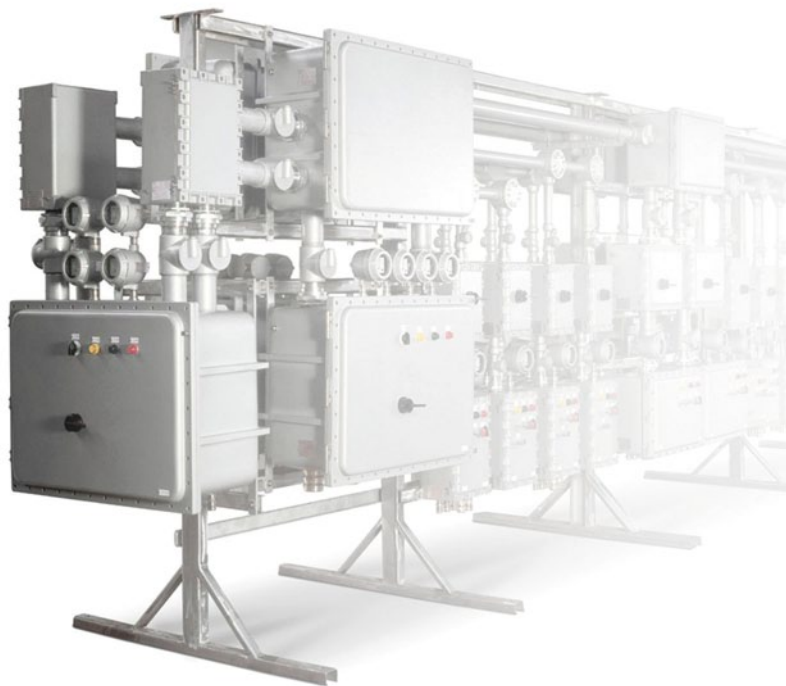
Material: galvanized steel or stainless steel.  
Standard threads: NPT - ISO 7.1 METRIC.  
Other type of threads on request.

**code: BMF - BMM - BFF - RE - REB - REM - REN - NP - PLG**

**II 2 GD Ex d IIB - IIC  
IP 66, suitable for  
ZONE 1-2-21-22**

# Tailor made switchracks and panel boards

Our Commercial and Technical staff can assist you in execution of switchracks and panel boards specially designed following customer's specifications. This service is provided directly by our factory in Italy and by our authorized assembly-points located in the most significant regions of the world. These special executions are made in accordance to the main types of protections such **Ex d**, **Ex de** suitable for heavy-duty environments.



## Quality and Protection

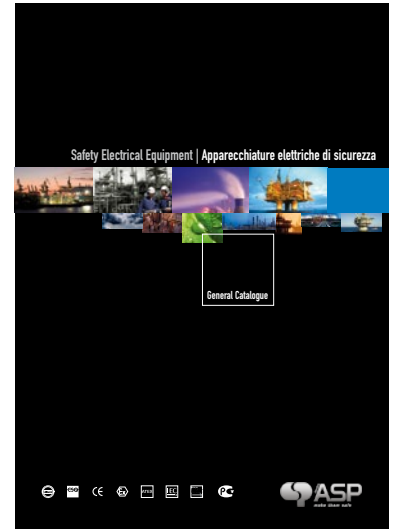
The constant improvement of the quality of our services and our products represents our top priority. Our quality management system is certified as complying with ISO 9001:2008. This internationally recognized standard assures the quality of every stage, from design to shipment, in our Company since 1995. The reliability and high technical standard of our products are attested by the approval of international notified bodies in conformity with ATEX and IEC-EX standard. Our Company has been notified with certificate CESI 01 ATEX 073Q attesting the compliance to ATEX Directive, and more recently, the first one in our country, with certificate IT/CES QAR attesting the compliance to IEC-EX, the new international standard for EX equipment.

# Service and Support

The scope of the present brochure is to give an overview of our range of products and services. Our Company is oriented in improving and updating continuously the commercial and technical informations and the level of services to our customers. The following instruments are actually at your disposal and some others will be available soon.

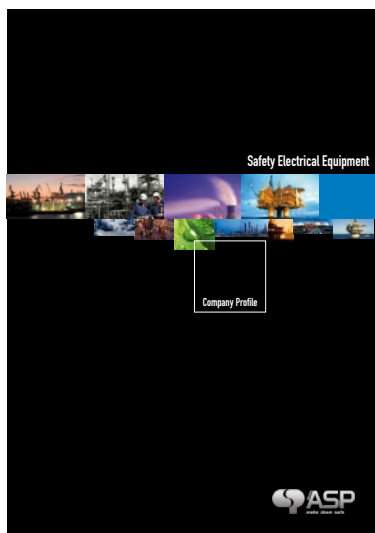
## GENERAL CATALOGUE

A technical description of our full range of products.



## COMPANY PROFILE

A general overview on our working capacity and customer service.



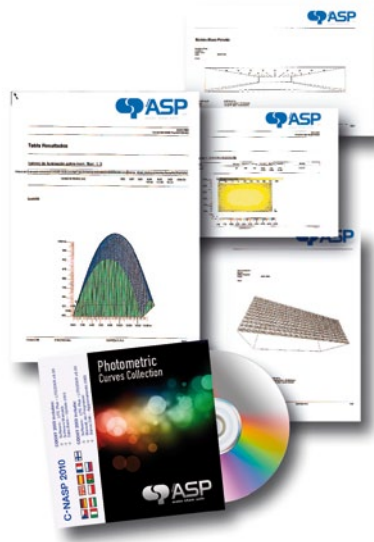
## OFFICIAL WEBSITE

The interactive door to our company and our online electronic catalogue.



## PHOTOMETRIC CURVES COLLECTION

The full collection of photometric curves of our lighting fixtures are at your disposal for lighting calculation.



## CERTIFIED FUNCTIONAL SYSTEM CONFIGBLOCK

Guideline for configuration of complexes systems of the full range of our enclosures AS; ESA; ESX; GUB and EJB.

